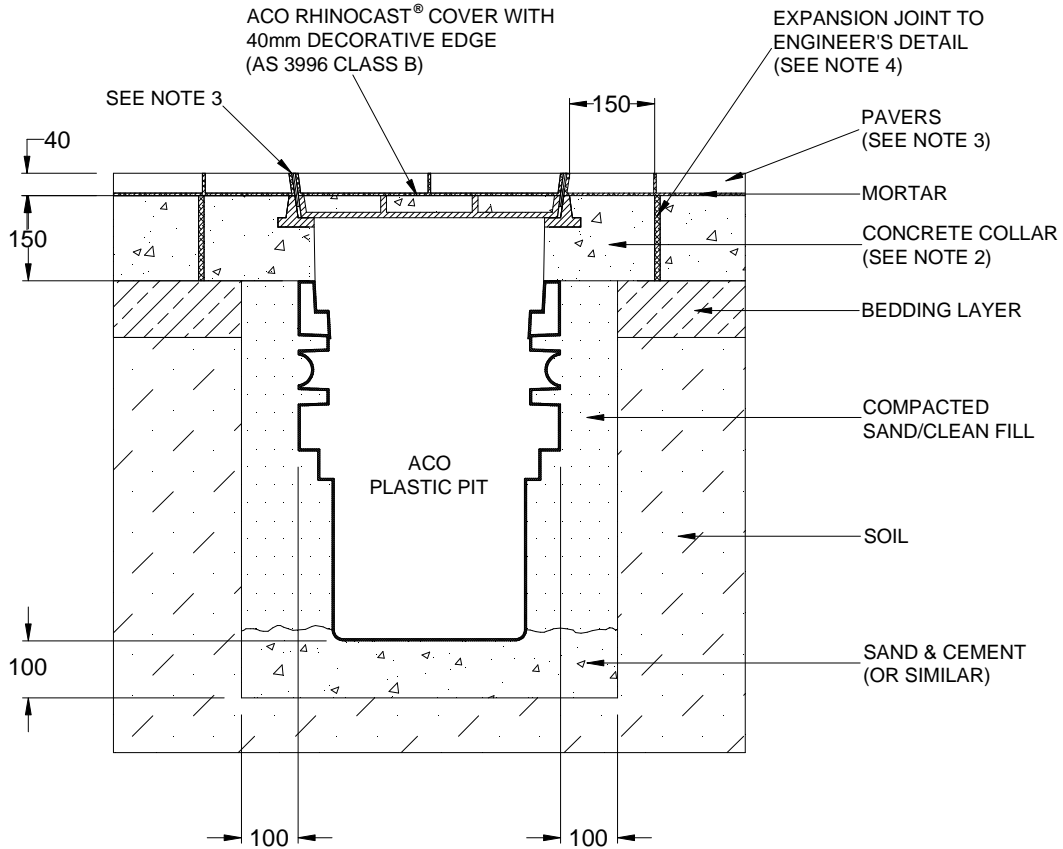


ACO CABLEMATE®	PLASTIC PIT INSTALLATION DRAWING	
DRWG# XCHR-BP40-3	With Rhinocast® Cover with 40mm Decorative Edge	
Pavers: For 2670kg Nominal Wheel Load		



NOTES:

1. Specific site conditions may require an increase in these dimensions or reinforcement. It is the customer's responsibility to ensure the installation drawing is detailed for the application and pit structure is protected from undue stress. *Engineering advice may be required.*
2. A minimum concrete strength of 25MPa is recommended for the collar. The concrete should be vibrated to eliminate air pockets.
3. The finished level of the pavers must be flush with the top of the decorative edge and the pavers must be fully bonded to the concrete collar.
4. Expansion and crack control joints are recommended to protect the cover and the concrete collar. *Engineering advice may be required.*
5. Refer to ACO's latest installation instructions for complete details.

ACO CABLEMATE®	PLASTIC PIT SPECIFICATION CLAUSE	ACO Polycrete Pty Ltd Australia Ph: 1300 765 226 www.acoaus.com.au
DRWG# XCHR-BP40-3	With Rhinocast® Cover with 40mm Decorative Edge	
ACO Limited New Zealand Ph: 0800 448 080 www.aconz.co.nz		

The cable enclosure(s) (for a nominal wheel load of 2670kg) with a *clear opening(s)* of shall be **ACO Polyethylene Plastic Pit(s) Type (s)** and *part no.(s)* with **Rhinocast®** cover(s) with 40mm decorative edge and *part no.(s)*

All materials and components within the scope of the system shall be obtained from ACO and the work shall be carried out as specified in accordance with the manufacturer installation recommendations.