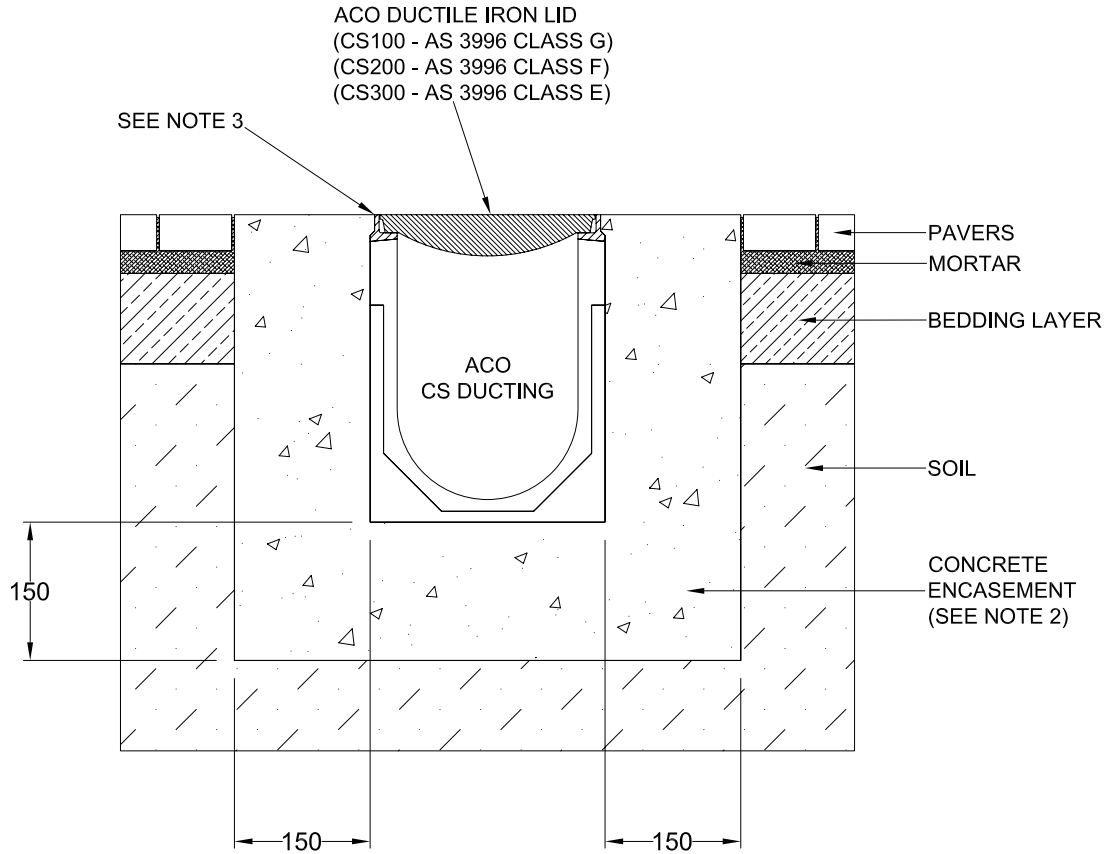


ACO CABLEMATE®	CABLE DUCTING INSTALLATION DRAWING	
DRWG# XCCS-DP www.acoaus.com.au	With Ductile Iron Lid	

Pavers: For 8000kg Nominal Wheel Load



- NOTES:**
1. Specific site conditions may require an increase in these dimensions or reinforcement. It is the customer's responsibility to ensure the concrete encasement is designed for the application. *Engineering advice may be required.*
 2. A minimum concrete strength of 25MPa is recommended. The concrete should be vibrated to eliminate air pockets.
 3. The finished level of the concrete encasement must be flush with the top of the ducting edge rail.
 4. Refer to ACO's latest installation instructions for complete details.

ACO CABLEMATE®	CABLE DUCTING SPECIFICATION CLAUSE	ACO Polycrete Pty Ltd 134-140 Old Bathurst Road Emu Plains NSW 2750 Tel: +61 2 4747 4000 Fax: +61 2 4747 4040 E: technical@acoaus.com.au
DRWG# XCCS-DP www.acoaus.com.au	With Ductile Iron Lid	

The surface cable ducting system (for a nominal wheel load of 8000kg) with *clear opening(s) of* shall be **ACO Cablemate®** CS..... ducting channel(s) and *part no.(s)* with Ductile Iron lid(s).

All materials and components within the scope of this system shall be obtained from ACO Polycrete Pty Ltd and the work shall be carried out as specified in accordance with the manufacturer installation recommendations.