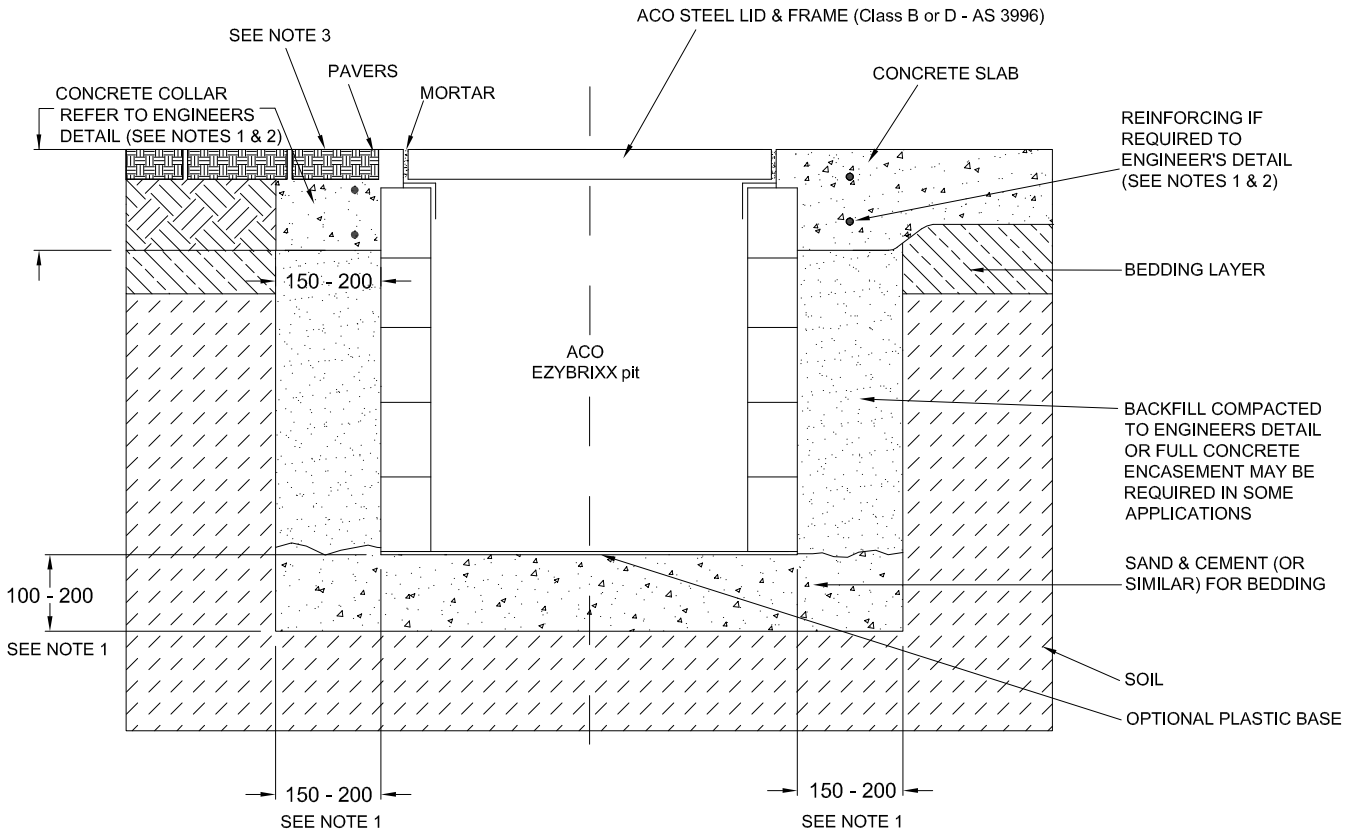


ACO CABLEMATE®	EZYBRIXX PITS INSTALLATION DRAWING	
DWG# IC005	For Paved or Concrete Surfaces	
www.acoaus.com.au		

8000kg SMWL (Max)⁵



NOTES:

1. Specific site conditions may require an increase in these dimensions or reinforcement. It is the customer's responsibility to ensure the correct lid is selected, encasement is designed for the application and the pit structure is protected from undue stress. *Engineering advice may be required.*
2. A minimum concrete strength of 25MPa is recommended for the collar.
3. The finished floor level must be flush with the top of the frame. Pavers (adjacent to the frame) must be restrained from movement.
4. Refer to ACO's Access Cover installation instructions for complete details. www.acoaccess.com.au/product-support
5. Class B and Class D lids are recommended for 2670kg and 8000kg Slow Moving Wheel Load (SMWL) respectively. Not recommended for roads.

ACO CABLEMATE®	EZYBRIXX PITS SPECIFICATION CLAUSE	ACO Pty Ltd 134-140 Old Bathurst Road Emu Plains NSW 2750 Tel: +61 2 4747 4000 Fax: +61 2 4747 4040 E: technical@acoaus.com.au
DRWG# IC005	With Steel Lid	
www.acoaus.com.au		

The cable enclosure(s) with a *clear opening(s)* of shall be **ACO EzyBrixx pit(s) size (s)** and/or *part no.(s)* with ACO Steel Lid & Frame assembly *part no.(s)*

All materials and components within the scope of the system shall be obtained from ACO Pty Ltd and the work shall be carried out as specified in accordance with the manufacturer's installation recommendations.