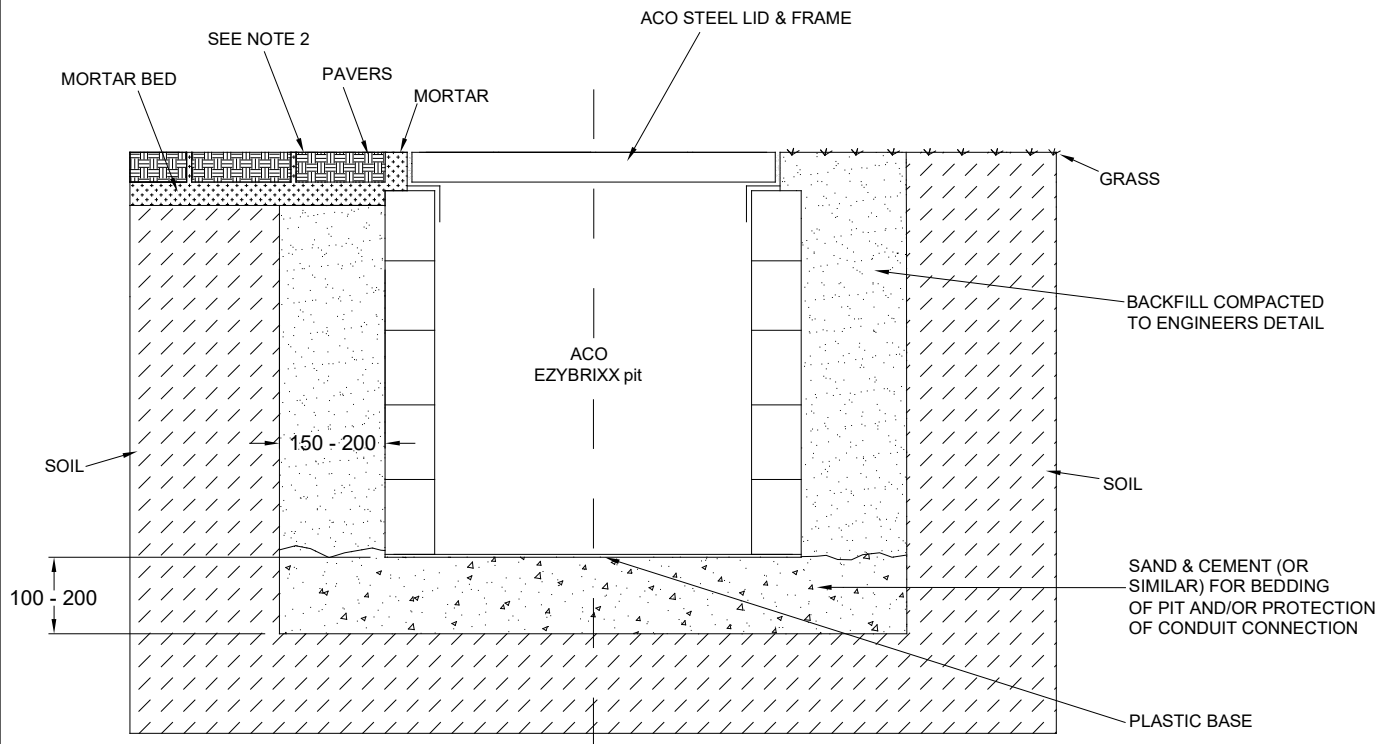


ACO CABLEMATE®	EZYBRIXX PITS INSTALLATION DRAWING	
DWG# IC007 www.acoaus.com.au	For MRWA Applications	

2 pavement options are shown below ³



NOTES:

1. The finished floor level must be flush with the top of the frame.
2. Pavers must be restrained from movement adjacent to pit wall.
3. The installation can apply to other pavement options.
4. For heavy duty applications involving regular SMW traffic, the backfill may need to be replaced with concrete. Seek engineering advice.

ACO CABLEMATE®	EZYBRIXX PITS SPECIFICATION CLAUSE	ACO Pty Ltd 134-140 Old Bathurst Road Emu Plains NSW 2750 Tel: +61 2 4747 4000 Fax: +61 2 4747 4040 E: technical@acoaus.com.au
DRWG# IC007 www.acoaus.com.au	For MRWA Applications	

The cable enclosure(s) with a *clear opening(s)* of shall be **ACO EzyBrixx pit(s) size (s) and/or part no.(s)** with ACO Steel Lid & Frame assembly *part no.(s)* The pit must conform and pass the requirements of MRWA specification (704).

All materials and components within the scope of the system shall be obtained from ACO Pty Ltd and the work shall be carried out as specified in accordance with the manufacturer installation recommendations.