

ACO Urbanfil_Tilemate_Two_part_Access_Cover

User Guide for Autodesk Revit files

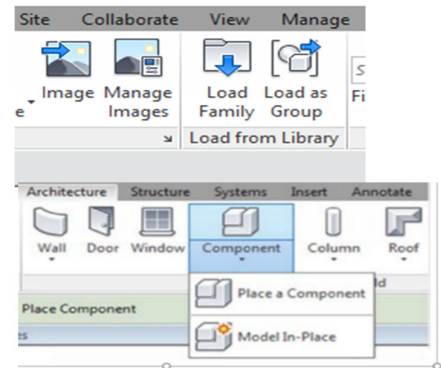
ACO Urbanfil Tilemate Two part Access Cover Package

This project includes the following Revit families along with accessories.

1. ME_ST_WPB_Urbanfil_Tilemate_Two_part_Access_Cover_ACO

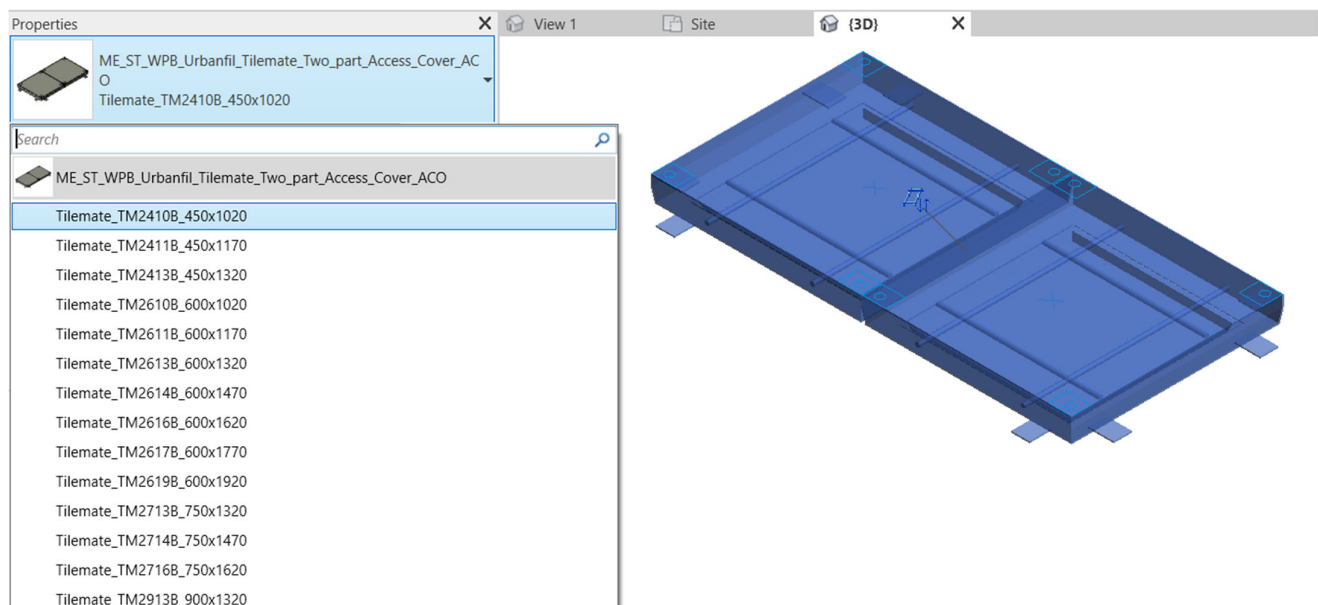
Loading ACO Urbanfil Tilemate Two part Access Cover into the project:

2. Download the ACO Urbanfil_Tilemate_Two_part_Access_Cover project file and save it to a suitable location.
3. Select **ME_ST_WPB_Urbanfil_Tilemate_Two_part_Access_Cover_ACO** load to your project.
4. Navigate to the “Insert” icon on the Revit ribbon and click “Load Family”
5. The file can now be placed into your project. Navigate to the “Architecture/Component” icons on the Revit ribbon and click “Place a Component”



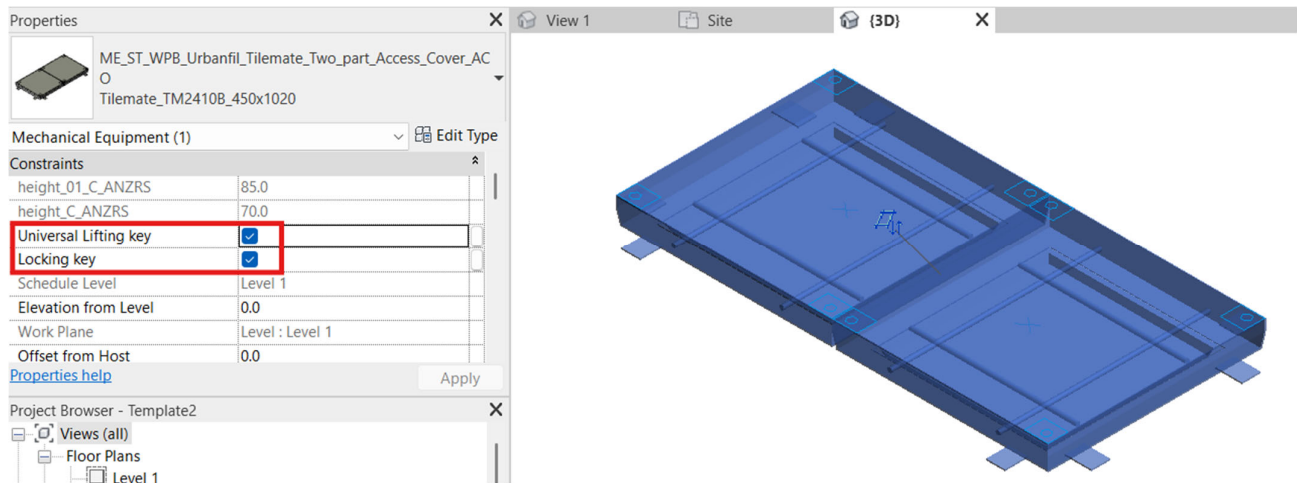
Placing of families

1. Click on the model – At properties tool bar, it will display family name and types.
2. **ME_ST_WPB_Urbanfil_Tilemate_Two_part_Access_Cover_ACO** family consists of different Sizes; the user must select the appropriate family type from the “Properties” drop down menu.



Selection of Accessories:

Click on the model, at properties tool bar, it will display a list of accessories such as **Universal short lifting key & Allen locking key**. User can select Both Accessories by selecting the check boxes.



Material Library:

The ACO Urbanfil_Tilemate_Two_part_Access_Cover files contain materials that are already pre-loaded into the components. When loading the ACO Urbanfil_Tilemate_Two_part_Access_Cover files into your project the pre-loaded materials will automatically transfer through.

Schedules and quantities:

The information such as article number, Descriptions, weight, installation guidelines within the parameters is stored as “shared Parameters” so can easily be appeared when creating a schedule and quantities in the project environment.