



ACO Cablemate

EzyBrixx® – rigid twin wall plastic pits

Pits constructed with interlocking wedge system



The ACO Group

Climate change sets organisations a challenge to react effectively with innovative solutions to new environmental conditions. With a necessary integrated approach, ACO provides solutions for professional surface water management. To compliment these intelligent systems, ACO manufactures a range of service enclosures including cable pits.

Founded in 1946, the ACO Group is a foremost supplier of drainage systems and utility enclosures. Major innovative strengths of the ACO Group are its continuous research and development and technical expertise in the use of polymer concrete, plastics, cast iron, stainless steel and cement concrete.

ACO in Australia

ACO in Australia was established in 1994 and is Australasia's leading manufacturer of water and cable management products with production facilities located in NSW. With over 30 years of Australian manufacturing experience in Western Sydney, ACO prides itself in drawing on the expertise of Australian talent for its workforce as well as sourcing local raw materials for the manufacture of finished products.

ACO Cablemate

2

ACO is one of Australia's foremost manufacturers of trafficable cable pits and continuous surface ducting systems complete with a selection of lids and access covers.

ACO cable pits are positioned on cable routes to provide branching or bending points and allow access for jointing and maintenance. Common cables routed through ACO cable pits include data/communication fibre-optic cables and low voltage electrical wiring. ACO's steel and iron access covers can be made discreet to harmonise with the building or urban environment.

Surface cable ducting systems enclose the cable route and allow low voltage cables and other utilities to be laid directly along a trafficable pavement. The cable route can be continually accessed through removable lids or covers. The enclosure is typically continuous and can be made visually discreet if necessary.

EzyBrixx®

EzyBrixx® is a range of modular rigid (twin wall) plastic pits comprising an innovative interlocking wedge system.

EzyBrixx® pits are capable of withstanding high loads and in most cases a concrete backfill is not required.

Components are made from 100% recycled polypropylene and are configured in 150mm high stacking units to create a lightweight and easy to install pit of any depth.

The EzyBrixx® modular units allows for customised sizes and shapes and can be made to order and delivered pre-assembled to site.

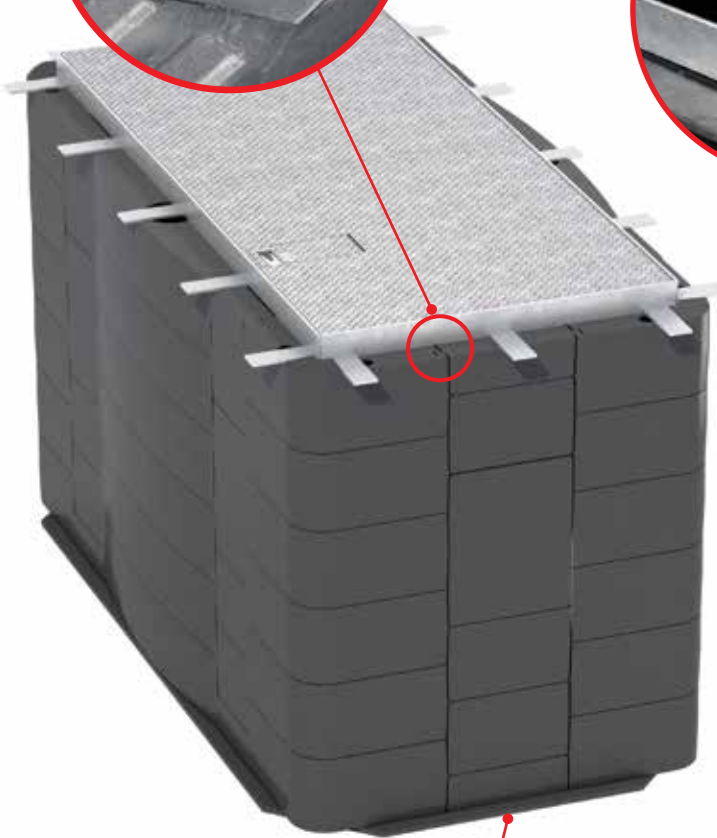
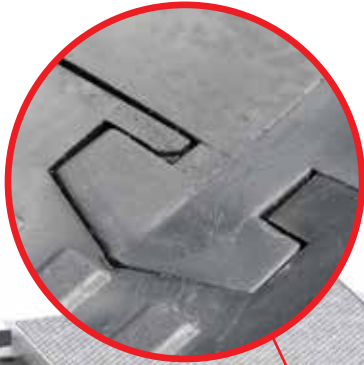
A choice of trafficable locking lids and access covers are available to provide security for underground infrastructure.



EzyBrixx® Features

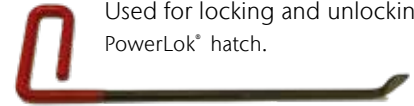
Wedge Interlock Connection

Unique wedge interlocking system provides a rigid and secure wall.



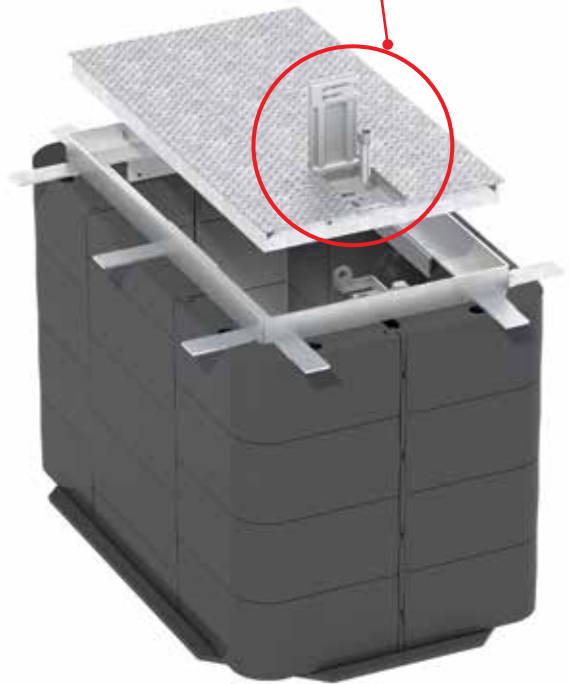
PowerLok® Lids

ACO's patented PowerLok® Lids provide high security for sensitive areas. All frames are secured to the pit wall.



PowerLok® Tool

Used for locking and unlocking PowerLok® hatch.



4

Optional Plastic Base

An optional plastic base can be supplied fitted to the pits.

Bases up to 1200mm x 1200mm clear opening are supplied riveted to the pit.

Bases for larger sizes are supplied loose for easy transport.

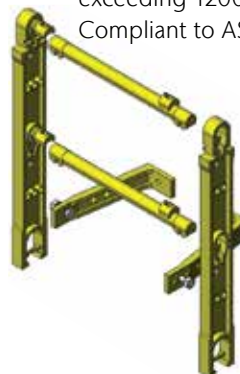


Optional Modular Step Ladder

Strong thermoplastic ladder of lightweight construction (4kg/m).

Recommended for pits exceeding 1200mm depth.

Compliant to AS 1657.





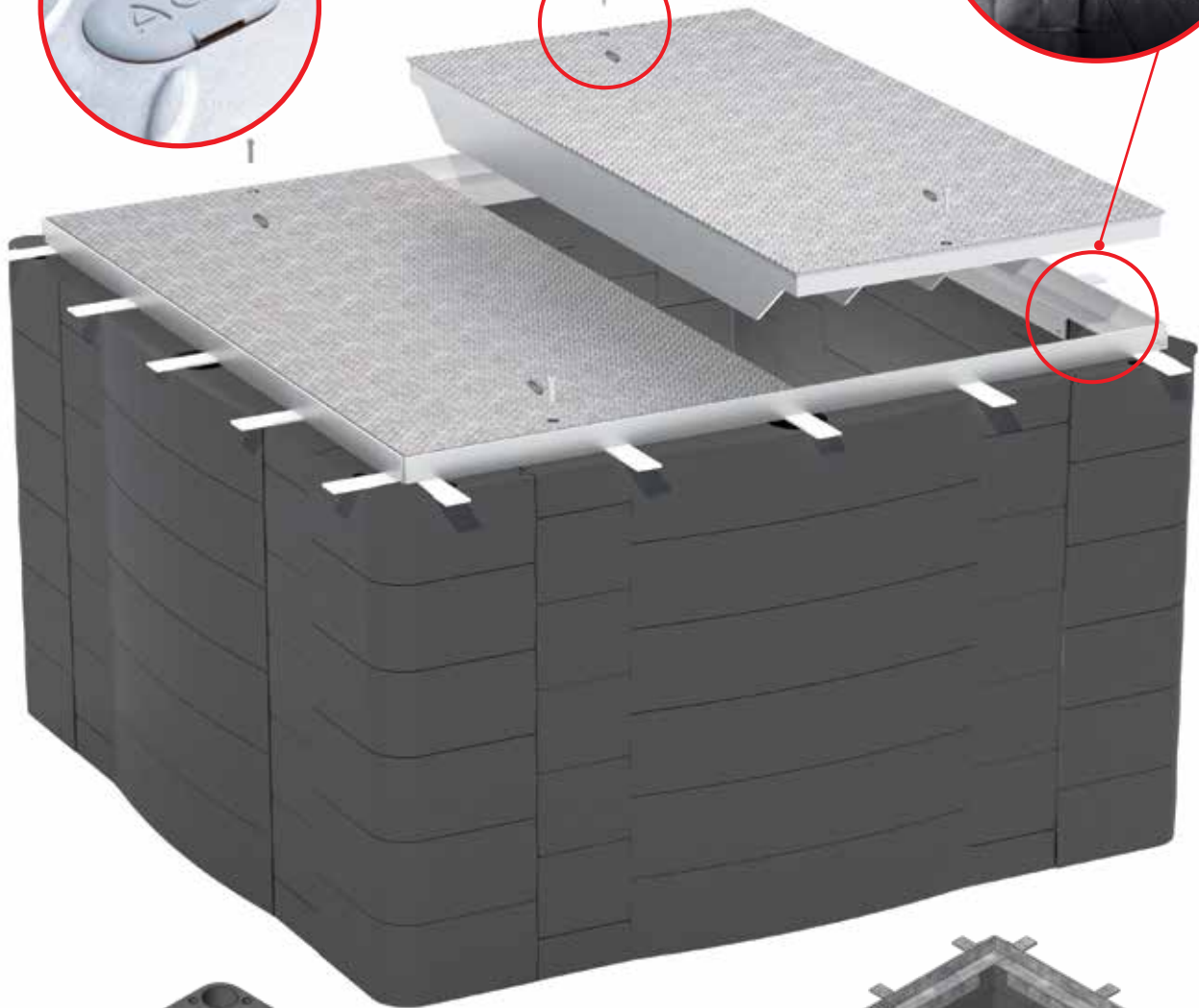
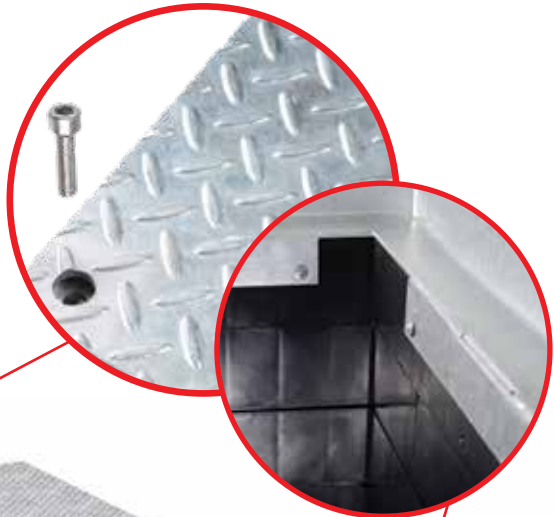
Lid Lifter
Optional universal lifting key.

Universal Plug
Universal plug allows lids to meet IP rating IP4X AS 60529.

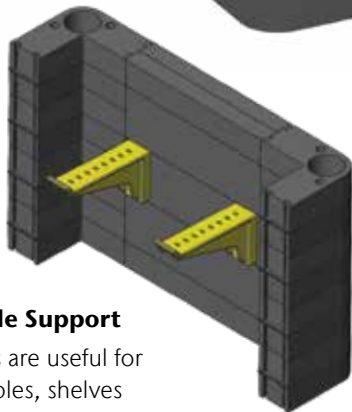


Standard Locking Lids
AS 3996 designed steel lids and frames are hot dipped galvanised to AS 4680.

Lids are secured with 2 x M12 locking bolts into the frame. All frames are secured to the pit wall.



Optional Cable Support
Cable supports are useful for suspending cables, shelves and other items on the pit wall.



Conduit Entry
Conduit entries can be created on-site with a holesaw.



Technical Support

ACO has invested extensively to provide technical support for its range of access covers and cable enclosures.

ACO's Technical Services Department provides advice on product selection and recommended installation procedures.

Equipped with purpose-written computer software, ACO's engineers can produce project specific design documents, free of charge and obligation.

Project Specific Services

Pit Sizing

ACO can help assess the project requirements and recommend the optimal pit sizes for the cable route. ACO will also build the pit and deliver pre-assembled to site.

Access Cover and Lid Selection

ACO can assist with the selection of the most appropriate cover or lid type for the application.

Cable Routes

Cable routes can pass through various pavement materials with different load and traffic requirements.

ACO can provide information to help safeguard the integrity of the underground space.

Compliance

The electrical and communications industry have specific regulations and codes of practice governing its industry.

ACO recommends that designers and installers adhere to the regulatory codes applicable and seek advice from the relevant legislative authorities and consulting engineers regarding each application.

Installation Steps

1. Excavate
2. Prepare the excavated ground
3. Drill cable entries
4. Install the pit and lid
5. Backfill



For more info visit

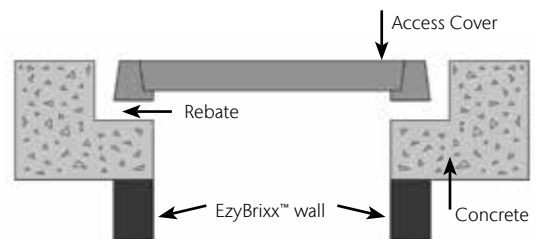
<https://www.acocablemate.com.au/product-support/installation/>



Special Applications

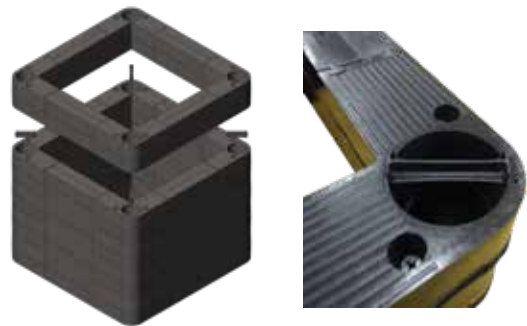
Concrete encased cover and frame systems

When a heavy duty cable pit is required or where paving needs to be bedded into the cover, ACO recommends an access cover and frame system. These access covers are installed above the pits and require a supporting concrete haunch.



Adjusting to a finished ground level

Sometimes decisions need to be made on site to determine the exact depth of the pit required. The EzyBrixx® pit depth can be increased after the pit has been installed. Connectors are available to support risers in 150mm increments.



Reinforcing

Large pits and pits subjected to high loads will require reinforcing. All reinforcing will be supplied and calculated at the quoting stage.



Parts list

EzyBrixx® - 600mm x 600mm

Dimensions LxWxD (mm)	Part No.	Weight (kg)
EzyBrixx Pits		
EzyBrixx Pit - 600 x 600 x 600	142528	23
EzyBrixx Pit - 600 x 600 x 600 with base	142646	27
EzyBrixx Pit - 600 x 600 x 900	142529	34
EzyBrixx Pit - 600 x 600 x 900 with base	142647	38
EzyBrixx Riser ³ - 600 x 600 x 150	142582	6
Steel Lids - single part (bolted)		
EzyBrixx Lid - 600 x 600 Class B ⁴	142575	33
EzyBrixx Lid - 600 x 600 Class D ⁴	142711	60

EzyBrixx® - 1200mm x 1200mm

Dimensions LxWxD (mm)	Part No.	Weight (kg)
EzyBrixx Pits		
EzyBrixx Pit - 1200 x 1200 x 900	142536	70
EzyBrixx Pit - 1200 x 1200 x 900 with base	142677	82
EzyBrixx Pit - 1200 x 1200 x 1050	142607	82
EzyBrixx Pit - 1200 x 1200 x 1050 with base	142678	94
EzyBrixx Pit - 1200 x 1200 x 1200	142537	94
EzyBrixx Pit - 1200 x 1200 x 1200 with base	142679	106
EzyBrixx Pit - 1200 x 1200 x 1350	142608	106
EzyBrixx Pit - 1200 x 1200 x 1350 with base	142680	118
EzyBrixx Riser ³ - 1200 x 1200 x 150	142584	12
Steel Lids - two part (bolted)		
EzyBrixx Lid - 1200 x 1200 Class B ⁴	142577	148
EzyBrixx Lid - 1200 x 1200 Class D ⁴	142496	236

EzyBrixx® - 1800mm x 1800mm

Dimensions LxWxD (mm)	Part No.	Weight (kg)
EzyBrixx Pits		
EzyBrixx Pit - 1800 x 1800 x 900	142698	136
EzyBrixx Pit - 1800 x 1800 x 1050	142701	154
EzyBrixx Pit - 1800 x 1800 x 1200	142703	172
EzyBrixx Pit - 1800 x 1800 x 1350	142616	190
EzyBrixx Pit - 1800 x 1800 x 1500	142618	311
EzyBrixx Pit - 1800 x 1800 x 1650	142620	339
EzyBrixx Pit - 1800 x 1800 x 1800	142622	367
EzyBrixx Base - 1800 x 1800	142731	27
Steel Lids - six part (bolted)		
EzyBrixx Lid - 1800 x 1800 Class B ⁴	142624	380
EzyBrixx Lid - 1800 x 1800 Class D ⁴	142625	585

EzyBrixx® - 1350 x 600 x 900mm (Type 8)

Dimensions LxWxD (mm)	Part No.	Weight (kg)
EzyBrixx Pits		
EzyBrixx Pit - 1350 x 600 x 900	142651	66
EzyBrixx Pit - 1350 x 600 x 900 with base	142652	76
EzyBrixx Base - 1350 x 600	142655	10
Steel Lids - two part (bolted)		
EzyBrixx Lid - 1350mm x 600mm Class B ⁴	142656	80
EzyBrixx Lid - 1350mm x 600mm Class D ⁴	142657	95

EzyBrixx® - 900mm x 900mm

Dimensions LxWxD (mm)	Part No.	Weight (kg)
EzyBrixx Pits		
EzyBrixx Pit - 900 x 900 x 900	142530	50
EzyBrixx Pit - 900 x 900 x 900 with base	142648	55
EzyBrixx Pit - 900 x 900 x 1050	142606	58
EzyBrixx Pit - 900 x 900 x 1050 with base	142649	63
EzyBrixx Pit - 900 x 900 x 1200	142531	66
EzyBrixx Pit - 900 x 900 x 1200 with base	142650	71
EzyBrixx Riser ³ - 900 x 900 x 150	142583	9
Steel Lids - two part (bolted)		
EzyBrixx Lid - 900 x 900 Class B ⁴	142576	93
EzyBrixx Lid - 900 x 900 Class D ⁴	142494	140

EzyBrixx® - 1500mm x 1500mm

Dimensions LxWxD (mm)	Part No.	Weight (kg)
EzyBrixx Pits		
EzyBrixx Pit - 1500 x 1500 x 900	142538	106
EzyBrixx Pit - 1500 x 1500 x 1050	142540	119
EzyBrixx Pit - 1500 x 1500 x 1200	142542	132
EzyBrixx Pit - 1500 x 1500 x 1350	142612	146
EzyBrixx Pit - 1500 x 1500 x 1500	142614	228
EzyBrixx Base - 1500 x 1500	142457	19
Steel Lids - four part (bolted)		
EzyBrixx Lid - 1500 x 1500 Class B ⁴	142578	250
EzyBrixx Lid - 1500 x 1500 Class D ⁴	142550	426

EzyBrixx® - 2100mm x 2100mm

Dimensions LxWxD (mm)	Part No.	Weight (kg)
EzyBrixx Pits		
EzyBrixx Pit - 2100 x 2100 x 900	142980	137
EzyBrixx Pit - 2100 x 2100 x 1050	142982	155
EzyBrixx Pit - 2100 x 2100 x 1200	142984	174
EzyBrixx Pit - 2100 x 2100 x 1350	142986	192
EzyBrixx Pit - 2100 x 2100 x 1500	142988	279
EzyBrixx Pit - 2100 x 2100 x 1650	142990	305
EzyBrixx Pit - 2100 x 2100 x 1800	142992	329
EzyBrixx Base - 2100 x 2100	142994	22
Steel Lids - nine part (bolted)		
EzyBrixx Lid - 2100mm x 2100mm Class B ⁴	142955	568
EzyBrixx Lid - 2100mm x 2100mm Class D ⁴	142956	743

1 Access covers require pits to be set deep into the pavement, see page 6 and for part no.s, see QR code below

2 For a full range of accessories, see QR code below

3 Risers are supplied loose

4 Class B and D are steel bolt locking lids, if a PowerLok lid is required, contact ACO

To view full list of parts



For custom sizes, contact ACO

Other ACO CABLEMATE® Enclosures

Polycrete® Pits

Pits manufactured from polymer concrete

Polyethylene Pits

Pits manufactured from flexible lightweight, moulded plastic

SCEC Pits

SCEC approved pits for defence projects to Security Level 1 and Security Level 2 as documented in the SEEPL catalogue

EzyBrixx™

Modular rigid twin wall plastic pits

SIT Pits

Series Isolation Transformer (SIT) pits used for airfield landing strip lighting

Polycrete® Ducting

Surface ducting systems comprising channels assembled to produce continuous runs

For more info visit : www.acocablemate.com.au

ACO Pty Ltd

ABN 65 050 102 942

www.acoaus.com.au

New South Wales and Head Office

134-140 Old Bathurst Road
Emu Plains NSW 2750

Australia

Telephone +61 2 4747 4000

Sales Hotlines

Telephone 1300 765 226

email sales@acoaus.com.au

Technical Services

email technical@acoaus.com.au

Queensland

467 Tufnell Road

Banyo QLD 4014

Telephone (07) 3292 4500

acoqld@acoaus.com.au

Victoria

9 Overseas Drive

Noble Park VIC 3174

Telephone (03) 9790 8800

acovic@acoaus.com.au

Western Australia

33-35 Sorbonne Crescent

Canning Vale WA 6155

Telephone (08) 6250 3700

acowa@acoaus.com.au

South Australia

Unit 14, 17-19 Churchill Road North

Dry Creek SA 5094

Telephone (08) 8162 7800

acosant@acoaus.com.au

© 2024 ACO Pty Ltd. All reasonable care has been taken in compiling the information in this document. All recommendations and suggestions on the use of ACO products are made without guarantee since the conditions of use are beyond the control of the company. It is the customer's responsibility to ensure that each product is fit for its intended purpose and that the actual conditions are suitable. ACO Pty Ltd pursues a policy of continuous product development and reserves the right to amend specifications without notice.

ACO. we care for water



Quality
Endorsed
Company

ISO 9001
QEC 1883
SAI Global
Assurance Services

LE0047
(2024-1000)